

# CASE STUDY

BOWLINE STUDENT ACCOMMODATION,  
RENSHAW STREET, LIVERPOOL

# FIRECHIEF®

making the world a safer place



## FIRECHIEF KITCHEN STOVE GUARD

SMART FIRE PREVENTION  
SYSTEM INSTALLED  
IN LIVERPOOL NEW  
BUILD STUDENT  
ACCOMMODATION

**Client:** NR Capricornus (part of the Niveda Realty Group)

**Architect:** FCG Architects

**Main Contractor:** Create Construction

**Electrical Contractor:** Park Electrical (Sunderland)



### WHAT WAS THE NEED?

Bowline in Renshaw Street, Liverpool is a new development; a combination of student accommodation and apart-hotel rooms. Liverpool City Council approved the demolition of the existing Renshaw Hall building and the construction of the hotel and an 11-storey block of student accommodation; 49 clusters totalling 357 bedrooms with shared kitchen/lounge; and 47 self contained studios. The students communal facilities include a sky lounge, private dining room, fitness studio, karaoke room, and cinema room.

Multiple residents in a building means more food being cooked and a higher risk of

kitchen cooking fires. The Firechief Kitchen Stove Guard was fitted in all kitchen areas to help keep all the residents in the building safer. A fire on an induction hob can start in just 1.5 to 2 minutes and a fire on a traditional electric hob within 6 minutes.

### WHY THE FIRECHIEF KITCHEN STOVE GUARD?

50% of all accidental dwelling fires start in the kitchen. However, the Firechief Kitchen Stove Guard provides a worry-free approach to managing cooker top safety without affecting cooking. The Stove Guard does this by alerting the user of pre-fire conditions and if no action is taken, it automatically turns off the electricity supply to the cooker. The intelligent heat sensor in the Kitchen Stove Guard tracks the rate of increasing temperature, as a steeply rising temperature is an indication of a developing fire hazard.

### HOW IT WORKS

The Firechief Kitchen Stove Guard is a device that works out when the temperature of cooking is too high (and therefore potentially hazardous) and turns off the source of ignition, effectively preventing kitchen fires before they start. This creates a safer home for the tenants of apartments and shared accommodation.

The Firechief Kitchen Stove Guard is a smart way to guard against kitchen fires because it responds before the formation of toxic gases and before a fire is ignited. It will even cut off the electricity supply if the hob has been left on accidentally – the setting for this can be tailored to individual installations. The cooker is reactivated simply by resetting the system once the cause of the alert has been investigated and controlled. The device is designed to work with all electric hobs.



+44 (0) 330 999 0019



[sales@firechiefglobal.com](mailto:sales@firechiefglobal.com)



[firechiefglobal.com](http://firechiefglobal.com)

# CASE STUDY

BOWLINE STUDENT ACCOMMODATION,  
RENSHAW STREET, LIVERPOOL

**FIRECHIEF**<sup>®</sup>  
making the world a safer place

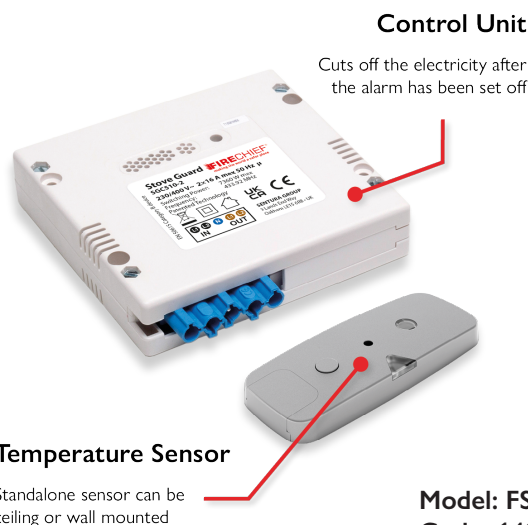
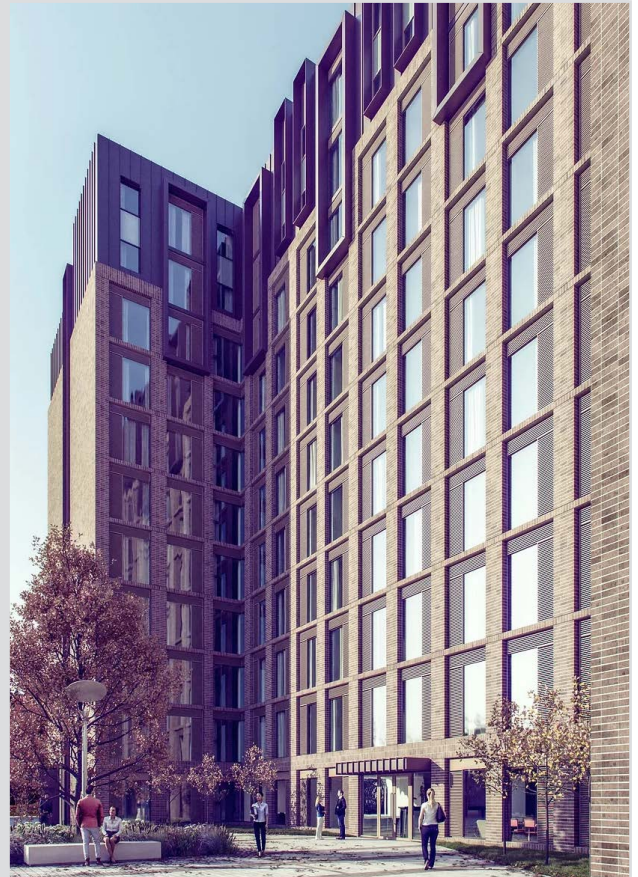
## FIRECHIEF KITCHEN STOVE GUARD

SMART FIRE PREVENTION SYSTEM INSTALLED IN LIVERPOOL NEW BUILD STUDENT ACCOMMODATION

### THE BENEFITS

The fitting of the Firechief Kitchen Stove Guard solution brings a number of benefits to the Bowline Liverpool student accommodation:

- Intelligent fire safety technology which prevents fires long before they can start. The heat sensor activates the cooker switch when pre-fire conditions are detected instead of reacting to extinguish a fire once it has actually begun
- Easy and simple installation.
- Continuous 24/7 protection for peace of mind. The device monitors and adapts to the occupiers cooking style
- Automatic fault diagnosis constantly analyses the Kitchen Stove Guard's function when the hob is in use – no monthly testing required
- Sleek sensor design, sympathetic to the modern décor of the kitchen
- Lower cost – less than half the cost of a fire suppression system
- No annual maintenance required
- Fulfils the requirements of Stove Guard Standard EN 50615
- 2-year warranty



 +44 (0) 330 999 0019

 [sales@firechiefglobal.com](mailto:sales@firechiefglobal.com)

 [firechiefglobal.com](http://firechiefglobal.com)